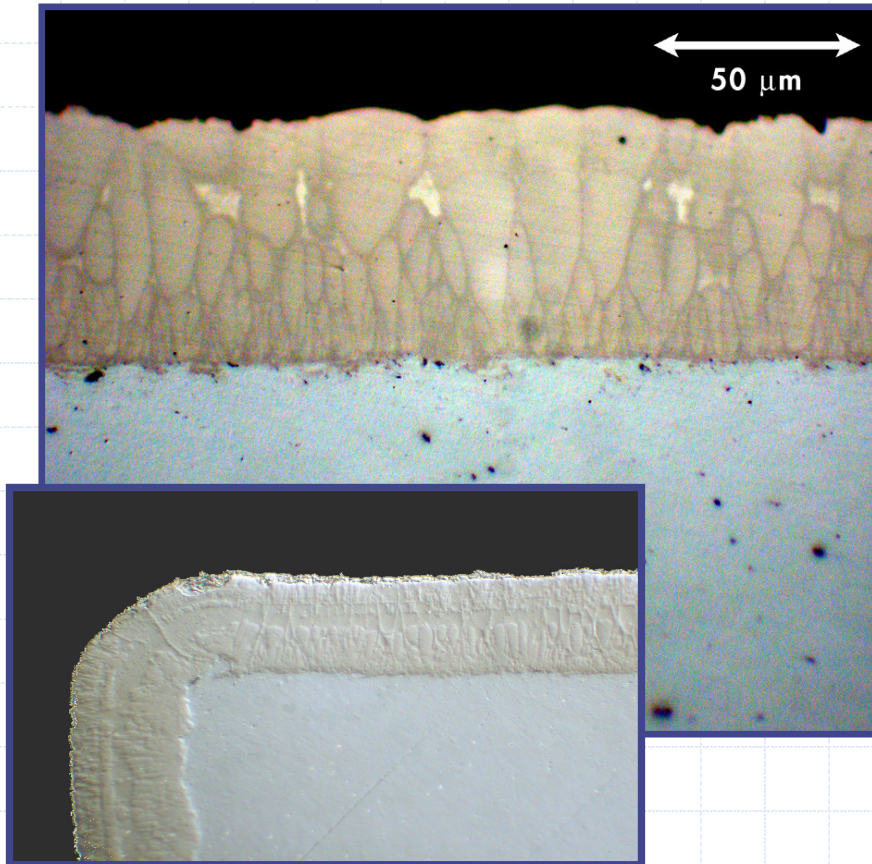


NiBoride Hard Chrome Replacement



Uniform Coating

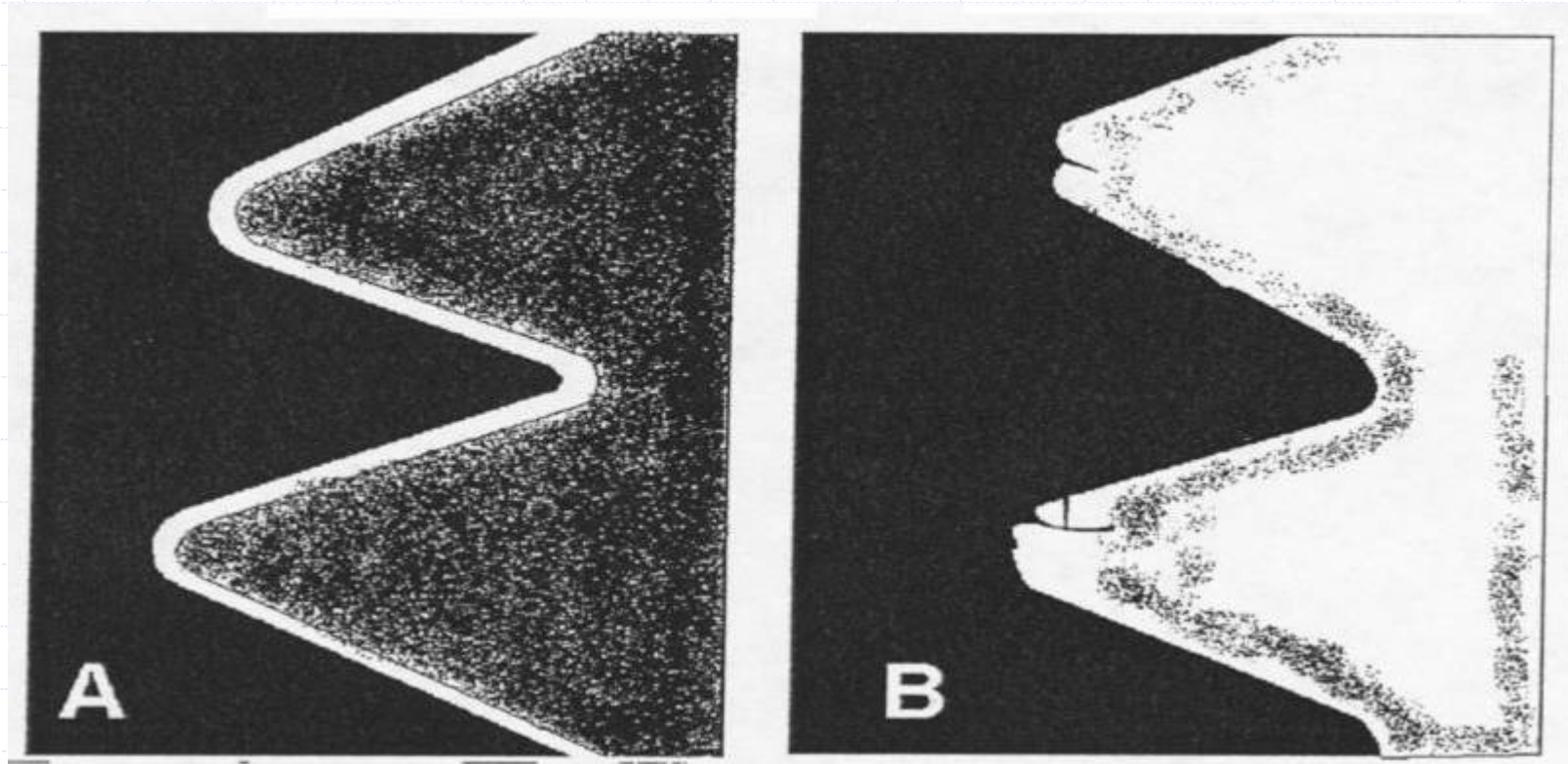


- ◆ Excellent bond to substrate
- ◆ Uniform thickness
- ◆ Uniform application
- ◆ Non line of sight
- ◆ Complex geometry
- ◆ Columnar structure

Comparison with Hard Chrome

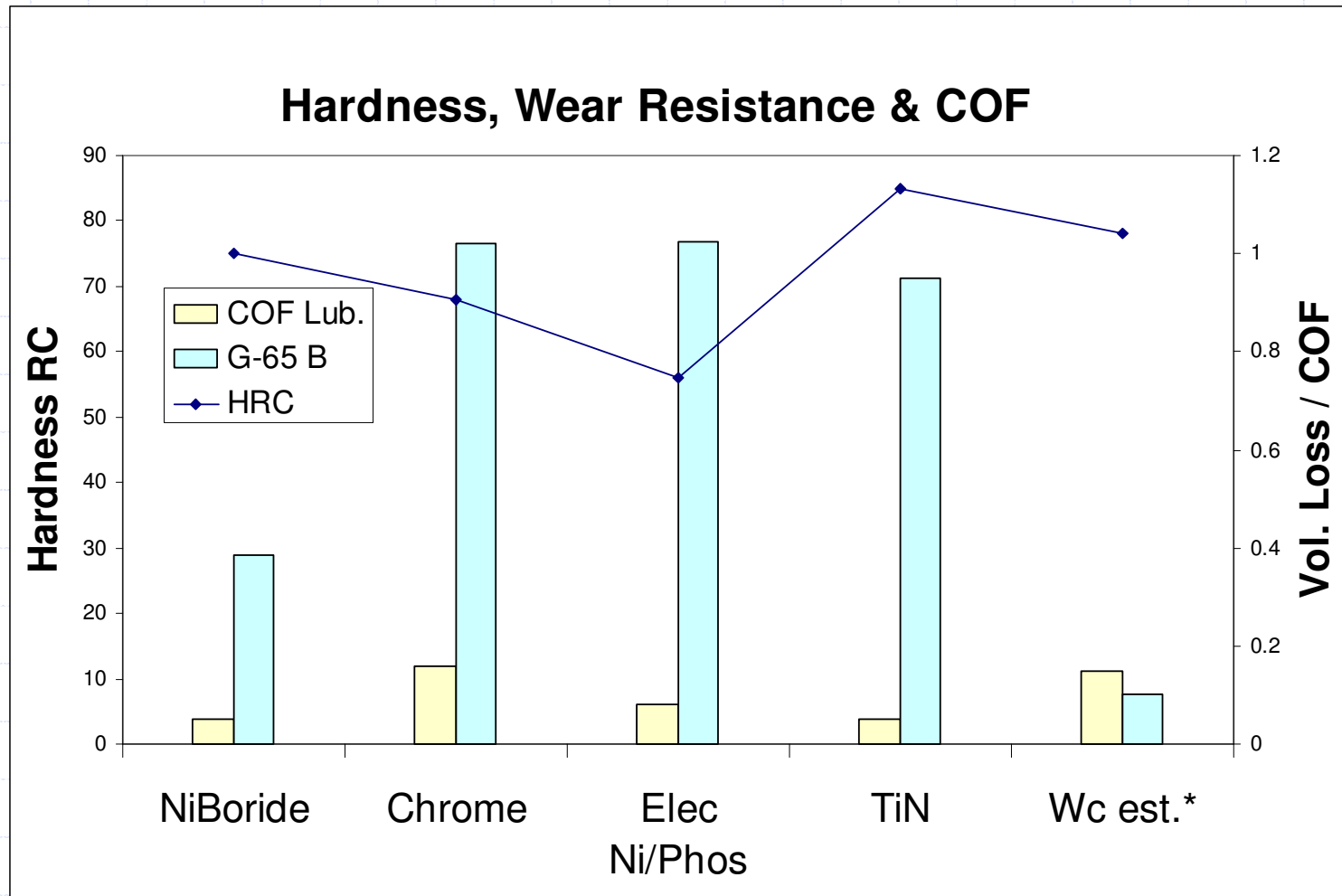
NiBoride

Hard Chrome



Threads of a bolt coated with NiBoride (A) and Hard Chrome (B)

Harness, Wear Resistance & Lubricated COF



Corrosion Resistance

- ◆ Maximum service temperature: 1922°F
- ◆ Corrosion resistance enhanced with under lay of Nickel Phosphorus
- ◆ Columnar structure

What can be coated with NiBoride

- ◆ Anything coated with Hard Chrome
- ◆ End Caps
- ◆ Nozzles
- ◆ Tip Assemblies
- ◆ Die Plates
- ◆ ETC.....



Extreme Coatings

Thank You

- ◆ Surface Engineering & Alloy Company
- ◆ Extreme Coatings
 - 888-367-2569
 - 727-528-7998
 - Fax 528-7995
 - www.surfaceengineering.com
 - www.extremecoating.com